

# Palintest

Water Analysis Technologies



WAGTECH PORTABLE WATER QUALITY LABORATORIES

POOL AND SPA   WASTEWATER   **DRINKING WATER**   PROCESS WATER   SOIL

## Who we are

Palintest manufactures a range of advanced water and environmental testing equipment, and from its Tyneside base exports to over 100 countries across the globe. These products are used in a wide variety of applications to protect the environment and safeguard public health. Crucially Palintest are able to simplify testing for key water quality parameters, enabling critical water quality decisions to be made with confidence.



Part of the successful Halma plc. since 1983, Palintest can trace its Tyneside roots back to the 1870s with the Wilkinson & Simpson Ltd. manufacturing facility in Newcastle. The defining moment in the development of the modern day Palintest was during the 1950s when Dr Thomas Palin produced the world standard method for disinfection control, the so-called Palin System or DPD method.

Palintest today employs 100 people worldwide, with 86 being based at the main facility in Gateshead where all product development and manufacturing is carried out. To support export activities the company has branch offices in China, Australia, USA and the Middle East.

Principle company activities are:

### Research, Development and Innovation

Since the invention of the DPD test for drinking water, Palintest has continued to innovate and deliver testing products that meet the needs of our users in terms of simplicity and reliability.

### Manufacturing

A focus on lean manufacture and intense quality control to provide the shortest lead times for our customers. Products are tracked from raw material to final quality for full audit trail for every single test.

### Logistics

Shipping to all corners of the globe with tracked deliveries and provision of international trade documentation such as Certificates of Origin.

### After-Sales Support

We are dedicated to delivering the highest levels of customer support so please do not hesitate to contact us or our local partners for assistance.



A HALMA COMPANY



# Portable Water Quality Laboratories

Fixed site laboratory testing facilities are not always the most practical or readily available solution for validation of drinking water quality. In extreme circumstances no permanent facilities exist and a more robust and portable solution is required to provide the critical water quality information necessary.

**The key benefits of using a Wagtech portable water quality laboratory include:**

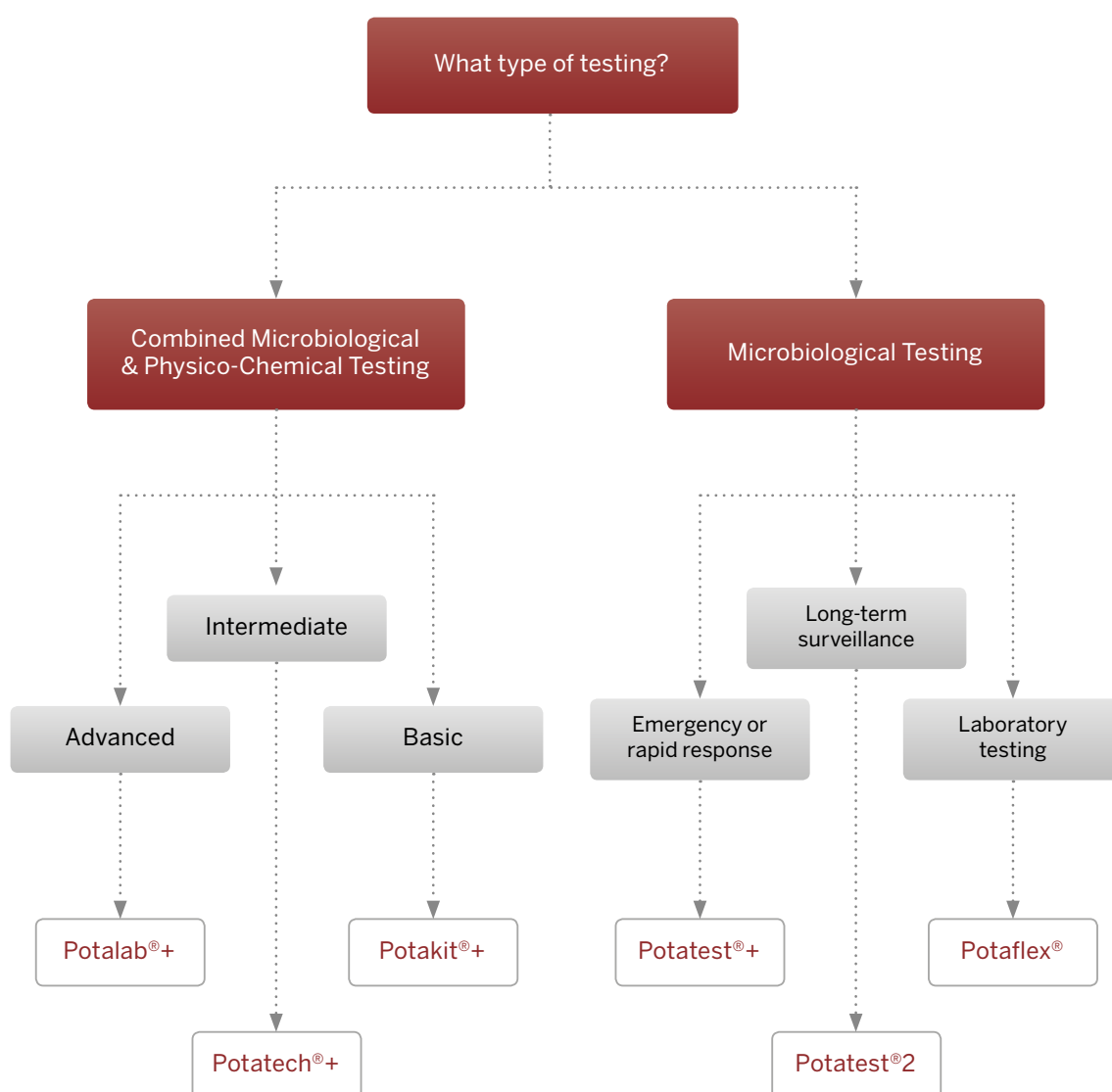
- Comprehensive testing ability – kits include a full range of both physico-chemical and microbiological parameters or microbiological parameters only
- Reliable data – test protocols conform to WHO guidelines on field-based water quality testing with simple, cost effective methods
- Versatile – use the Wagtech kits anywhere, with or without mains power or other services

Data is produced quickly and accurately using stable and portable consumables available via our international network of branches and distributors.



## Choose Your Wagtech Kit

With a comprehensive choice of kits containing either microbiological alone or combined with physico-chemical parameters there is a Wagtech kit to meet all needs. Follow the flow diagram below to determine the best product for your specific application.



**Potalab®+**



**Potatech®+**



**Potakit®+**



**Potatest®+**



**Potatest® 2**



**Potaflex®**



# Combined Microbiological and Physico-Chemical Testing

Feature	Potalab®+	Potatech®+	Potakit®+
Incubator Format	Dual	Single	Single
Number of petri dishes	40	20	20
Nutridisk Capacity	14	7	7
Membrane Filtration Unit Included	Yes	Yes	Yes
Coliform Starter Pack for 200 Tests	Yes	Yes	Yes
37°C Profile	Yes	Yes	Yes
44°C Profile	Yes	Yes	Yes
User Defined Temperature Setting	Yes		
Custom Profiles	Yes		
Adjustable incubation time period	Yes	Yes	Yes
Sample ID	Yes	Yes	Yes
Operator ID	Yes	Yes	Yes
Resuscitation Period	Yes	Yes	Yes
Voice Prompts	Yes	Yes	Yes
Voice Prompt Upload	Yes		
Multilingual Interface	Yes	Yes	Yes
Backlight	Yes	Yes	Yes
Incubation Log	Yes	Yes	Yes
Micro USB Connection	Yes	Yes	Yes
Data Download	Yes	Yes	Yes
Windows® App	Yes	Yes	Yes
Android App	Yes	Yes	Yes
Mains Power (110 - 250V)	Yes	Yes	Yes
Lead Acid Battery	Yes	Yes	Yes
Battery Capacity (full cycles)	5	5	5
Vehicle socket charger	Yes	Yes	Yes
Crocodile clip connectors	Yes	Yes	Yes
Thermotolerant/Faecal Coliforms	Yes	Yes	Yes
Total Coliforms	Yes	Yes	Yes
E coli	Yes	Yes	Yes
Faecal Streptococci	Yes	Yes	Yes
Pseudomonas aeruginosa	Yes	Yes	Yes
Salmonella typhi	Yes	Yes	Yes
Total Colony Count	Yes	Yes	Yes
Turbidity	Yes	Yes	Yes
Free Chlorine	Yes	Yes	Yes
Combined Chlorine	Yes	Yes	Yes
Total Chlorine	Yes	Yes	Yes
Ammonia	Yes	Yes	Yes
Arsenic	Yes		Yes
Nitrite	Yes	Yes	Yes
Nitrate	Yes	Yes	Yes
pH	Yes	Yes	Yes
Conductivity	Yes	Yes	Yes
TDS	Yes		
Temperature	Yes	Yes	Yes
Compact Turbimeter	Yes	Yes	
Turbidity Tube			Yes
Photometer 7500	Yes		
Photometer 7100		Yes	
Contour Comparator			Yes
Micro 800 pH Meter	Yes		
Micro 800 Conductivity/TDS Meter	Yes		
Pocket pH Sensor		Yes	Yes
Pocket Conductivity Sensor		Yes	Yes

# Microbiological Testing

Feature	Potatest®+	Potatest® 2	Potaflex®
Incubator Format	Single	Dual	Single
Number of petri dishes	20	40	40
Nutridisk Capacity	7	14	14
Dipslide Capacity			Yes
Flexi-Rack System			Yes
Membrane Filtration Unit Included	Yes	Yes	Yes
Coliform Starter Pack for 200 Tests	Yes	Yes	Yes
37°C Profile	Yes	Yes	Yes
44°C Profile	Yes	Yes	Yes
User Defined Temperature Setting		Yes	Yes
Custom Profiles		Yes	Yes
Adjustable incubation time period	Yes	Yes	Yes
Sample ID	Yes	Yes	
Operator ID	Yes	Yes	
Resuscitation Period	Yes	Yes	
Voice Prompts	Yes	Yes	
Voice Prompt Upload		Yes	
Multilingual Interface	Yes	Yes	
Backlight	Yes	Yes	
Incubation Log	Yes	Yes	
Micro USB Connection	Yes	Yes	
Data Download	Yes	Yes	
Windows® App	Yes	Yes	
Android App	Yes	Yes	
Mains Power (110 - 250V)	Yes	Yes	Yes
Lead Acid Battery	Yes	Yes	
Battery Capacity (full cycles)	5	5	
Vehicle socket charger	Yes	Yes	
Crocodile clip connectors	Yes	Yes	Yes
Thermotolerant/Faecal Coliforms	Yes	Yes	Yes
Total Coliforms	Yes	Yes	Yes
E coli	Yes	Yes	Yes
Faecal Streptococci	Yes	Yes	Yes
Pseudomonas aeruginosa	Yes	Yes	Yes
Salmonella typhi	Yes	Yes	Yes
Total Colony Count	Yes	Yes	Yes
Water Safety Kit	Yes		
Turbidity	Yes		
Free Chlorine	Yes		
Combined Chlorine	Yes		
Total Chlorine	Yes		
pH	Yes		
Turbidity Tube	Yes		
Contour Comparator	Yes		
Pocket pH Sensor	Yes		



# Wagtech Incubators


Microbiological testing is critical to determining the suitability of drinking water for human consumption.

Rural water supplies, humanitarian relief and mobile laboratories have depended upon Wagtech to provide reliable and robust testing for Faecal and Total Coliforms plus other key indicator organisms.

## The New Wagtech Incubator

Drawing on decades of experience in field microbiological analysis the new Wagtech Incubator combines tough hardware with simple-to-use methods.



 37 deg C - 17Hr  
 Remaining 2.10 hrs 37.02°C  
 Stop | Voice inst

## Class Leading Incubator Performance

Using lightweight but incredibly thermally efficient building materials guarantees the Wagtech Incubator retains heat and thereby extends battery life to a maximum. Self-diagnostics record incubator performance for validation of results.

Voice Instructions  
 Français ▲  
 English ▼  
 Back | OK

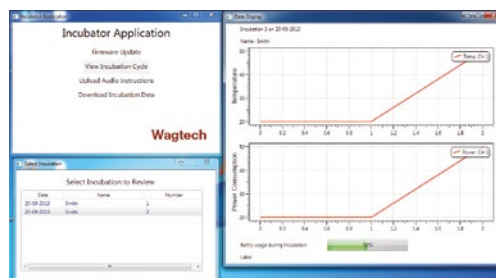
## Clear, Concise Instructions

Uniquely combining pictorial instructions with voice prompts, membrane filtration has never been so simple.



### App Integration

Available for a variety of operating systems, the Wagtech Incubator apps provide download and data management for microbiological testing. Uniquely for the Potalab incubator the app supports the upload of new voice instructions in any dialect.



### Large Petri Dish Capacity

Maximise samples with the largest capacity for petri dishes. Up to 20 samples can be incubated simultaneously. The Potalab® kit contains a dual incubator with independent temperature control, doubling the capacity.



# Potalab®+ Advanced Portable Water Quality Laboratory

Ideally suited to longer term surveillance and professional monitoring, the Potalab® + provides portable analysis of a wide and comprehensive range of key drinking water quality parameters where the most important factor is to obtain laboratory levels of accuracy.



Built for both microbiological and physico-chemical water testing, the Potalab® + is the most advanced portable water quality laboratory available today.

#### The key features include:

- High capacity microbiological analysis – dual incubators with independent temperature control for simultaneous determination of up to 40 samples for Thermotolerant or Faecal Coliforms and Total Coliforms
- Advanced physico-chemical analysis – includes the Photometer 7500, Compact Turbimeter, Palintest Arsenator and electrochemical meters for pH and conductivity/TDS
- Versatile and flexible – suitable for use in the laboratory, as a makeshift central water laboratory or as an entirely self-contained field kit with independent power

Delivered in two lockable, robust and waterproof field cases the Potalab®+ provides advanced water quality analysis for any environment.

#### Ordering Info

---

Wagtech Potalab® + Advanced Portable Water Quality Laboratory – PTW 10010

---

## Contents

---

### Wagtech Potalab® + (M) Case contains:

Dual Potalab Incubators with independent temperature control and audible prompts, 2 petri dish racks, high performance Lead Acid battery with capacity for at least 5 cycles per incubator, mains charger with international adaptors, vehicle socket battery power lead, crocodile clip power leads;

Membrane Filtration assembly, bronze disc, pistol grip vacuum pump with no-kink silicone tubing, 5 Media Measuring Devices (MMDs), 38.1g Membrane Lauryl Sulphate Broth, 5 Pasteur pipettes, hand lens, forceps, 40 Aluminium re-usable petri dishes, 200 sterilised and sealed membrane filters, 200 absorbent pads, absorbent pad dispenser, steel sampling cup, sampling cable

Polypropylene 250ml beaker, quick start prompt cards, full microbiological instruction manual, sterilisable integrated work surface

PTW 10010 Wagtech Potalab® +  
Advanced Portable Water  
Quality Laboratory

### Wagtech Potalab® + (C) Case contains

Photometer 7500 and light cap, 6 photometer cuvettes, photometer reagents for 200 tests for Free and Total Chlorine, Ammonia, Fluoride, Nitrite and Nitrate

Compact Turbimeter, SDVB calibration standards, 4 Compact Turbimeter sample cuvettes, silicone oil, cleaning/oiling cloth

Palintest Arsenator Digital Arsenic Test System, unique three-stage filter assembly, conical flask, consumables for 200 Arsenic tests

Micro 800 pH/Temperature Meter with pH calibration buffers

Micro 800 Conductivity/TDS Meter with conductivity calibration standard

Cuvette brush, 2 Dilution tubes, crush/stir rods, De-ion pack, instructions.

---





### Technical Specifications

Potalab® + Incubator	<b>Test Protocols</b>	37°C, 44°C, up to 6 user-defined profiles from 20 - 50°C, user selectable time periods for all temperatures, automatic resuscitation period inclusion
	<b>Temperature Stability</b>	± 0.1°C
	<b>Temperature Control</b>	Laser-trimmed thermistor pair with automatic temperature validation.
	<b>User Interface</b>	On screen and audible prompts available in English, French, Spanish and Chinese
	<b>Data Log</b>	Last five incubation cycles performance report
	<b>Connectivity</b>	Micro-USB connection to Windows® and Android devices for data download and audible prompt upload via dedicated App
	<b>Size (W x L x H)</b>	110 x 123 x 145mm
	<b>Weight</b>	690g
	<b>Power Supply</b>	Replaceable sealed lead acid battery with mains, vehicle and external charging options
	<b>Power Consumption</b>	High thermal efficiency heating system, 5 full cycles from a fully charged battery
Potalab® +	<b>Microbiological Capacity</b>	Dual Potalab® incubators with consumables for 200 tests for Thermotolerant/Faecal Coliforms or Total Coliforms. Optional Nutridisk capability for additional parameters including Faecal Streptococci, Pseudomonas aeruginosa, Salmonella and E. coli
	<b>Physico-Chemical Parameters</b>	Includes Ammonia, Arsenic, Free Chlorine, Total Chlorine, Fluoride, Nitrate, Nitrite, Turbidity, pH, Conductivity, Total Dissolved Solids (TDS). Additional parameters available.
	<b>Size (W x L x H)</b>	Two off heavy duty field cases, each 555 x 428 x 211mm
	<b>Weight</b>	12 kg (M), 11 kg (C)

# Potatech®+ Intermediate Portable Water Quality Laboratory

The single incubator version of the Potalab® + advanced level test kit, the Potatech® + features a complete set of digital instruments but remains lightweight and extremely portable for rural and remote water monitoring.

Previously called the Basic Water Safety Planning Kit, the Potatech® + is designed and supplied for the field monitoring aspect of the Joint Monitoring Programme (JMP). A favourite of field-based WASH professionals, the Potatech® + combines sophisticated digital instrumentation with high levels of portability to provide a detailed assessment of the microbiological, physical and chemical quality of a water supply.

## The key features include:

- Definitive field microbiological analysis – single incubator constructed from thermally efficient materials to deliver maximum incubation cycles from the high capacity battery.
- Reliable physico-chemical analysis – includes the Photometer 7100, Compact Turbimeter and Pocket Sensors for pH and conductivity
- Designed for use in any environment – provided in a protective case containing all components required for measurement of critical parameters

The Potatech® + is an ideal resource for the testing of water quality in rural communities and is supported by a full range of consumables and technical advice.



## Ordering Info

Wagtech Potatech® + Intermediate Portable Water Quality Laboratory – PTW 10480



## Contents

---

Wagtech Incubator with standard test protocols and audible prompts, petri dish racks, high performance Lead Acid battery with capacity for at least 5 cycles per charge, mains charger with international adaptors, vehicle socket battery power lead, crocodile clip power leads;

Membrane Filtration assembly, bronze disc, pistol grip vacuum pump with no-kink silicone tubing, 5 Media Measuring Devices (MMDs), 38.1g Membrane Lauryl Sulphate Broth, 5 Pasteur pipettes, hand lens, forceps, 20 Aluminium re-usable petri dishes, 200 sterilised and sealed membrane filters, 200 absorbent pads, absorbent pad dispenser, steel sampling cup, sampling cable

Polypropylene 250ml beaker, quick start prompt cards, sterilisable integrated work surface

Photometer 7100 and light cap, 6 photometer cuvettes, photometer reagents for 200 tests for Free and Total Chlorine, Ammonia, Nitrite and Nitrate

Compact Turbimeter, SDVB calibration standards, 4 Compact Turbimeter sample cuvettes, silicone oil, cleaning/oiling cloth

Pocket pH Sensor and pH calibration buffers

Pocket Conductivity Sensor with conductivity calibration standard

Cuvette brush, 2 Dilution tubes, crush/stir rods, De-ion pack, instructions

PTW 10480 Wagtech Potatech®+  
Intermediate Portable Water  
Quality Laboratory

---



## Technical Specifications

Potatech® + Incubator	<b>Test Protocols</b>	37°C and 44°C temperature selections, user selectable time profiles, automatic resuscitation period profile
	<b>Temperature Stability</b>	± 0.1°C
	<b>Temperature Control</b>	Laser-trimmed thermistor pair with automatic temperature validation.
	<b>User Interface</b>	On screen and audible prompts available in English, French, Spanish and Chinese
	<b>Data Log</b>	Last five incubation cycles performance report
	<b>Connectivity</b>	Micro-USB connection to Windows® and Android devices for data download
	<b>Size (W x L x H)</b>	110 x 123 x 145mm
	<b>Weight</b>	690g
	<b>Power Supply</b>	Replaceable sealed lead acid battery with mains, vehicle and external charging options
	<b>Power Consumption</b>	High thermal efficiency heating system, 5 full cycles from a fully charged battery
Potatech® +	<b>Microbiological Capacity</b>	Wagtech® incubator with consumables for 200 tests for Thermotolerant/Faecal Coliforms or Total Coliforms. Optional Nutridisk capability for additional parameters including Faecal Streptococci, Pseudomonas aeruginosa, Salmonella and E. coli
	<b>Physico-Chemical Parameters</b>	Includes Ammonia, Free Chlorine, Total Chlorine, Nitrate, Nitrite, Turbidity, pH, Conductivity. Additional parameters available.
	<b>Size (W x L x H)</b>	Single heavy duty field case 555 x 428 x 211mm
	<b>Weight</b>	13 kg

# Potakit®+ Basic Portable Water Quality Laboratory

Designed for routine testing in the field, the Potakit®+ includes a combination of visual and digital test instruments that offer an affordable yet accurate testing solution.

The kit of choice for NGOs and water technicians implementing small-scale rural WASH programmes and for organisations with limited funds but who still wish to conduct an accurate assessment of key drinking water quality parameters in the field.

## The key features include:

- Intuitive field microbiological analysis
  - simple-to-use incubator with unique audible prompts for ease of operation and USB connection for data download
- Complete physico-chemical analysis – visual testing apparatus for turbidity, Ammonia, Arsenic, Free and Total Chlorine, Fluoride, Nitrite and Nitrate plus Pocket Sensors for pH and conductivity
- Ergonomic kit layout – all key components laid out logically and conveniently to guide users through the test protocol

The Potakit® + provides cost-effective drinking water testing for a wide range of circumstances and is an ideal resource for WASH programme implementation.



## Contents

Wagtech Incubator with standard test protocols and audible prompts, petri dish racks, high performance Lead Acid battery with capacity for at least 5 cycles per charge, mains charger with international adaptors, vehicle socket battery power lead, crocodile clip power leads;

Membrane Filtration assembly, bronze disc, pistol grip vacuum pump with no-kink silicone tubing, 5 Media Measuring Devices (MMDs), 38.1g Membrane Lauryl Sulphate Broth, 5 Pasteur pipettes, hand lens, forceps, 20 Aluminium re-usable petri dishes, 200 sterilised and sealed membrane filters, 200 absorbent pads, absorbent pad dispenser, steel sampling cup, sampling cable

Polypropylene 250ml beaker, quick start prompt cards, sterilisable integrated work surface. Contour Comparator and discs, 4 comparator cuvettes, comparator reagents for 200 tests for Free and Total Chlorine, Ammonia, Fluoride, Nitrite and Nitrate

Visual Arsenic Detection Kit with consumables for 200 tests. Double length Turbidity Tube. Pocket pH Sensor and pH calibration buffers. Pocket Conductivity Sensor with conductivity calibration standard, Cuvette brush, 2 Dilution tubes, crush/stir rods, De-ion pack, instructions



## Ordering Info

Wagtech Potakit® + Intermediate Portable Water Quality Laboratory – PTW 10030

## Technical Specifications

Potakit®+ Incubator	<b>Test Protocols</b>	37°C and 44°C temperature selections, user selectable time profiles, automatic resuscitation period profile
	<b>Temperature Stability</b>	± 0.1°C
	<b>Temperature Control</b>	Laser-trimmed thermistor pair with automatic temperature validation.
	<b>User Interface</b>	On screen and audible prompts available in English, French, Spanish and Chinese
	<b>Data Log</b>	Last five incubation cycles performance report
	<b>Connectivity</b>	Micro-USB connection to Windows® and Android devices for data download
	<b>Size (W x L x H)</b>	110 x 123 x 145mm
	<b>Weight</b>	690g
	<b>Power Supply</b>	Replaceable sealed lead acid battery with mains, vehicle and external charging options
	<b>Power Consumption</b>	High thermal efficiency heating system, 5 full cycles from a fully charged battery
Potakit®+	<b>Microbiological Capacity</b>	Wagtech® incubator with consumables for 200 tests for Thermotolerant/Faecal Coliforms or Total Coliforms. Optional Nutridisk capability for additional parameters including Faecal Streptococci, Pseudomonas aeruginosa, Salmonella and E. coli
	<b>Physico-Chemical Parameters</b>	Includes Ammonia, Arsenic, Free Chlorine, Total Chlorine, Nitrate, Nitrite, Turbidity, pH, Conductivity. Additional parameters available.
	<b>Size (W x L x H)</b>	Single heavy duty field case 555 x 428 x 211mm
	<b>Weight</b>	13 kg



# Potatest®+ Rapid Response Portable Water Quality Laboratory

Widely used by organisations involved in large scale emergencies or simple water quality testing projects, the Potatest® + is a lightweight microbiological test kit offering low-cost, rapid response testing of basic water quality parameters.



Designed to complement the increased emphasis now being placed upon Water Safety Plans (WSPs) and their role in assessing and managing risk throughout each step of the drinking water supply process.

## The key features include:

- Removable Water Safety Kit (WSK) – contains instruments and visual test equipment to determine whether a full microbiological verification is required.
- Rapid field microbiological analysis – using Membrane Filtration protocols for screening of Faecal and/or Total Coliforms
- Compact kit layout – components grouped for intuitive test protocols with pictorial prompt cards for minimal training requirements

The Potatest® + is available quickly when emergency strikes and supports widespread testing activity by a range of users.

## Contents

Wagtech Incubator with standard test protocols and audible prompts, petri dish racks, high performance Lead Acid battery with capacity for at least 5 cycles per charge, mains charger with international adaptors, vehicle socket battery power lead, crocodile clip power leads;

Membrane Filtration assembly, bronze disc, pistol grip vacuum pump with no-kink silicone tubing, 5 Media Measuring Devices (MMDs), 38.1g Membrane Lauryl Sulphate Broth, 5 Pasteur pipettes, hand lens, forceps, 20 Aluminium re-usable petri dishes, 200 sterilised and sealed membrane filters, 200 absorbent pads, absorbent pad dispenser, steel sampling cup, sampling cable

Polypropylene 250ml beaker, quick start prompt cards, sterilisable integrated work surface. Contour Comparator and discs, 4 comparator cuvettes, comparator reagents for 250 tests for Free and Total Chlorine. Double length Turbidity Tube. Pocket pH Sensor and pH calibration buffers. Cuvette brush, Dilution tube, crush/stir rods, De-ion pack, instructions



## Ordering Info

Wagtech Potatest® + Rapid Response Portable Water Quality Laboratory – PTW 10005

## Technical Specifications

Potatest®+ Incubator	<b>Test Protocols</b>	37°C and 44°C temperature selections, user selectable time profiles, automatic resuscitation period profile
	<b>Temperature Stability</b>	± 0.1°C
	<b>Temperature Control</b>	Laser-trimmed thermistor pair with automatic temperature validation.
	<b>User Interface</b>	On screen and audible prompts available in English, French, Spanish and Chinese
	<b>Data Log</b>	Last five incubation cycles performance report
	<b>Connectivity</b>	Micro-USB connection to Windows® and Android devices for data download
	<b>Size (W x L x H)</b>	110 x 123 x 145mm
	<b>Weight</b>	690g
	<b>Power Supply</b>	Replaceable sealed lead acid battery with mains, vehicle and external charging options
	<b>Power Consumption</b>	High thermal efficiency heating system, 5 full cycles from a fully charged battery
Potatest®+	<b>Microbiological Capacity</b>	Wagtech® incubator with consumables for 200 tests for Thermotolerant/Faecal Coliforms or Total Coliforms. Optional Nutridisk capability for additional parameters including Faecal Streptococci, Pseudomonas aeruginosa, Salmonella and E. coli
	<b>Physico-Chemical Parameters</b>	Free Chlorine, Combined Chlorine, Total Chlorine, Turbidity, pH.
	<b>Size (W x L x H)</b>	Single heavy duty field case 464 x 366 x 176mm
	<b>Weight</b>	9 kg

# Potatest® 2 Advanced Portable Microbiological Water Quality Laboratory

For a more detailed microbiological analysis, the Potatest® 2 is the perfect choice for professionals testing drinking water for a wide range of bacteriological parameters, either in the laboratory or the field environment.



Featuring twin digital incubators this kit is capable of carrying out simultaneous incubation of both Thermotolerant and Total Coliforms. Custom incubation profiles allow the user to conduct a wider range of bacteriological parameters.

## The key features include:

- Complete indicator organism analysis – determine both Faecal/Thermotolerant and Total Coliforms simultaneously or use a variety of Nutridisks
- Convenient kit format – all required items are laid out for ergonomic use and aseptic procedures
- Electronic reporting – download incubator data and add colony counts for a complete microbiological report

The Potatest® 2 provides WHO compliant microbiological testing for drinking water in a single robust case.

## Contents

Dual Potalab Incubators with independent temperature control and audible prompts, 2 petri dish racks, high performance Lead Acid battery with capacity for at least 5 cycles per incubator, mains charger with international adaptors, vehicle socket battery power lead, crocodile clip power leads;

Membrane Filtration assembly, bronze disc, pistol grip vacuum pump with no-kink silicone tubing, 5 Media Measuring Devices (MMDs), 38.1g Membrane Lauryl Sulphate Broth, 5 Pasteur pipettes, hand lens, forceps, 40 Aluminium re-usable petri dishes, 200 sterilised and sealed membrane filters, 200 absorbent pads, absorbent pad dispenser, steel sampling cup, sampling cable

Polypropylene 250ml beaker, quick start prompt cards, full microbiological instruction manual, sterilisable integrated work surface





## Ordering Info

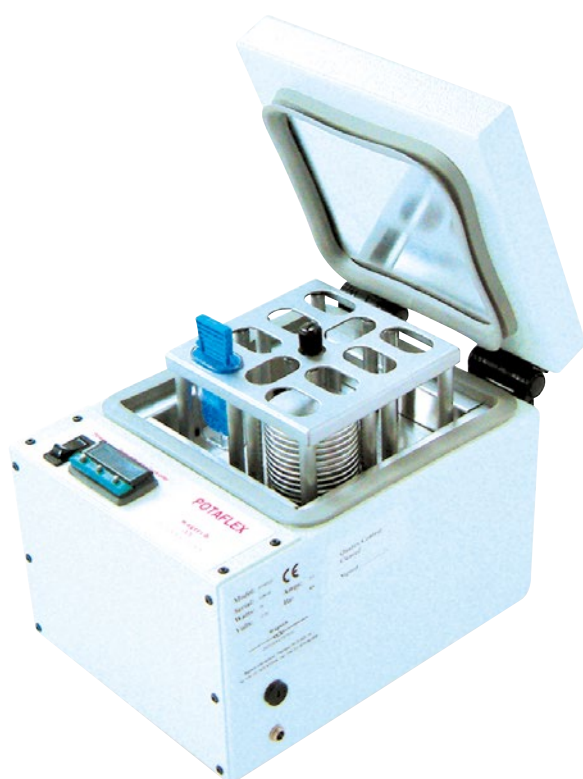
Wagtech Potatest® 2 Advanced Portable Microbiological Water Quality Laboratory – PTW 10020

## Technical Specifications

Potatest® 2 Incubator	<b>Test Protocols</b>	37°C, 44°C, up to 6 user-defined profiles from 20 - 50°C, user selectable time periods for all temperatures, automatic resuscitation period inclusion
	<b>Temperature Stability</b>	± 0.1°C
	<b>Temperature Control</b>	Laser-trimmed thermistor pair with automatic temperature validation.
	<b>User Interface</b>	On screen and audible prompts available in English, French, Spanish and Chinese
	<b>Data Log</b>	Last five incubation cycles performance report
	<b>Connectivity</b>	Micro-USB connection to Windows® and Android devices for data download and audible prompt upload via dedicated App
	<b>Size (W x L x H)</b>	110 x 123 x 145mm
	<b>Weight</b>	690g
	<b>Power Supply</b>	Replaceable sealed lead acid battery with mains, vehicle and external charging options
	<b>Power Consumption</b>	High thermal efficiency heating system, 5 full cycles from a fully charged battery
Potatest® 2	<b>Microbiological Capacity</b>	Dual Wagtech® incubator with consumables for 200 tests for Thermotolerant/Faecal Coliforms or Total Coliforms. Optional Nutridisk capability for additional parameters including Faecal Streptococci, Pseudomonas aeruginosa, Salmonella and E. coli
	<b>Size (W x L x H)</b>	Single heavy duty field case 555 x 428 x 211mm
	<b>Weight</b>	12 kg

# Potaflex® Microbiological Water Quality Laboratory

Dedicated testing of microbiological water quality in a fixed site laboratory with a unique Flexi-Rack System to hold a variety of media options.



Custom incubation a wider range of bacteriological parameters is made simple with the Potaflex®.

## The key features include:

- Flexible media options – the Flexi-Rack System (FRS) supports petri dishes, Nutridisks and dipslides
- Comprehensive kit components – includes Membrane Filtration hardware, Coliform Starter Pack and accessories
- Transportable and rugged – provided in a robust, lockable carry case

The Potaflex® provides flexible and high capacity laboratory analysis for a range of bacteriological parameters.

## Contents

Potaflex Incubator with adjustable temperature control, mains charger with international adaptors, external battery connectors

Flexi-Rack System (FRS) assembly with capacity for 40 petri dishes, 20 pre-prepared Nutridisks or 8 dipslides or a combination of each

Membrane Filtration assembly, bronze disc, pistol grip vacuum pump with no-kink silicone tubing, 5 Media Measuring Devices (MMDs), 38.1g Membrane Lauryl Sulphate Broth, 5 Pasteur pipettes, hand lens, forceps, 40 Aluminium re-usable petri dishes, 200 sterilised and sealed membrane filters, 200 absorbent pads, absorbent pad dispenser, steel sampling cup, sampling cable



### Ordering Info

Wagtech Potaflex® Microbiological Water Quality Laboratory – PTW 10050

### Technical Specifications

Temperature Settings	Adjustable from 20°C - 50°C with user selectable time profiles
Temperature Stability	± 0.5°C
User Interface	LCD display with temperature and time remaining display
Weight	5 kg
Power Supply	Mains power (110 – 230V AC), external 12V DC battery connection

**Palintest Ltd**

Palintest House, Kingsway, Team Valley,  
Gateshead, Tyne & Wear, NE11 0NS, England  
Tel: +44 (0) 191 491 0808  
Fax: +44 (0) 191 482 5372  
sales@palintest.com (Mainland UK)  
export@palintest.com (International)

**Palintest Australia**

1/53 Lorraine Street,  
Peakhurst Business Centre,  
Peakhurst, NSW 2210, Australia  
Tel: +61 1300 131516  
Fax: +61 1300 131986  
palintest@palintest.com.au

**Palintest USA**

1455 Jamike Avenue (Suite 100),  
Erlanger, Kentucky, 41018 USA  
Tel: +1 859 341 7423  
Toll Free: 800 835 9629  
Fax: +1 859 341 2106  
info@palintestusa.com

**Palintest China**

Room 1711, Fanli Mansion,  
22 Chaowai Street, Chaoyang District,  
Beijing 100020 PRC  
Tel: +86 10 6588 6200  
Fax: +86 10 6588 8311  
china@palintest.com

**Palintest Middle East**

P.O. Box 27709, Engomi 2432,  
Nicosia, Cyprus  
Tel: +357 22666080  
Fax: +357 22660355  
sales@palintest.me

REPRESENTED BY:

Visit our website for further  
information on our products and  
applications

[www.palintest.com](http://www.palintest.com)

All the information within this brochure was  
correct at the time of printing. Palintest reserve  
the right to make changes to their products to  
improve their performance or appearance.



**Palintest**  
Water Analysis Technologies  
A HALMA COMPANY